

**TWO-COMPONENT, TRANSPARENT EPOXY PRIMER FOR CONCRETE
REAL RESIN 360**

PRODUCT DESCRIPTION

REAL RESIN 360 is a two-component, transparent epoxy primer for concrete, free of solvents.

TECHNICAL FEATURES

Appearance	Full gloss
Color	Transparent
Density (gr./ml. 20°C)	1.07 ± 0,05
Mixing Ratio by weight	Comp.: A 73 unit Comp.: B 27 unit
Solids by weight (w/w)	% 92 ± 2
Application Method	Trowel, brush, roller
Mixture Life (20°C)	20-25 min.
Full Curing (20°C)	2-7 days
Flare Time	180 °C
Temperature Resistance	-20°C +60°C



DRYING INFORMATION (100 micron KFK)

	Touch Dry	Hard Drying	Waiting Drying Time Between Layers (minimum)
-5°C	12 hour	29-30 hour	24 hour
0°C	9 hour	20-21 hour	18 hour
5°C	6 hour	13-14 hour	12 hour
15°C	120-160 min.	5-6 hour	3.5 hour
25°C	80-100 min	3-4 hour	2 hour
35°C	60-80 min	1,5-2 hour	1.5 hour

NOTES: As the application thickness increases, consumption also increases.

Consumption Wet Film Thickness (μ)	Dry Film Thickness (μ)	Theoretical consumption rate ± 10 (kg./m ²)
280	270	0,300

NOTES: As the application thickness increases, consumption also increases.

APPLICATION AREAS AND FEATURES

REAL RESIN 360 is a primer that is compatible with all types of flooring systems.

REAL RESIN 360 areas of use;

For priming cement screeds on reinforced concrete floor surfaces. Suitable for low to medium absorbent surfaces.

Used as a primer for epoxy polyurethane floor coatings and anti-slip surfaces.

USAGE

Surface Preparation

The application surface must be thoroughly cleaned of contaminants such as oil and grease. Any peeling old paint (on previously painted surfaces) must be removed. Rust and surface irregularities should be treated using a machine with a diamond tip, in accordance with SA 2 ½ standards. When applying by spraying, the use of a mask is mandatory. Especially in small and enclosed spaces, proper ventilation is essential.

Use of the Product

Before use, the components of the **REAL RESIN 360** primer should be thoroughly stirred separately. Then, combine the primer with the hardener and mixed until a homogeneous mixture is achieved. To prevent condensation, the material must be applied only to a clean, dry surface with a temperature above the dew point. The temperature of the binder component should be between +20°C and +35°C. When using long spray hoses and paint temperatures below +15°C, thinning may be required, which can result in a thinner coating layer and extended drying time.

ENVIRONMENTAL CONDITIONS

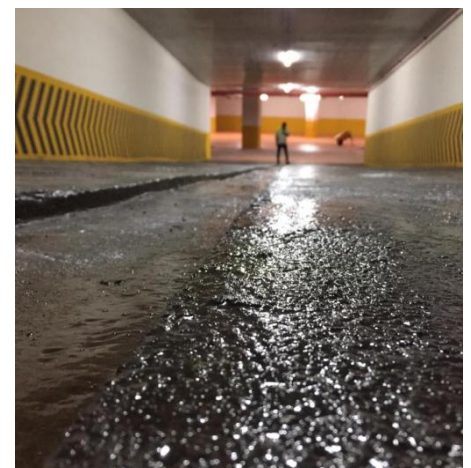
The ambient temperature should be between +15°C and 35°C. Application should not be done when the relative humidity exceeds 80%. The surface temperature should be at least 3-5°C above the dew point to prevent surface condensation.

It should be noted that consumption will increase in applications at low temperatures. The surface temperature should be at least +5°C and at most +45°C.

PACKAGES

REAL RESIN 360 Component A: 3,65 kg. Component B: 1,35 kg.
Total set weight: 5 kg.

-
REAL RESIN 360 Component A: 13,14 kg. Component B: 4,86 kg.
Total set weight: 18 kg.



SHELF LIFE

The material should be stored in its original packaging in a cool and dry place. The shelf life in unopened packaging is 24 months for components A and B.

HEALTH AND SAFETY INFORMATION

Read the MSDS form (Material Safety Data Sheet) for necessary safety rules and warnings. The minimum safety rules to be followed are as follows.

- Contact of the product with skin and eyes should be prevented by using gloves, protective glasses, face mask and industrial cream.
- Ensure adequate air circulation during application and until the paint dries.
- If the product comes into contact with the skin, it should be washed with warm water and soap or industrial cleaner. If splashed into eyes, rinse with water for at least 10 minutes and seek medical attention.
- All warning notes on the buckets should be read carefully and recommended working rules should be followed.

*Our information about the products is prepared based on our own laboratory tests and research under normal conditions. Our company is not responsible for the work done under inappropriate application conditions. Our company reserves the right to change this information. For more detailed information, please apply to R.Y.K.

Rev. No:09/Rev.Date: October 2022

REAL[®]



www.adacolor-bg.com

Sofia 6 "Andrey Germanov" str. mobile: 089 666 3042 / 089 468 3880	Sofia, "Ovcha Kupel 1" quarter 33 "Promishlena" str., 429 bl., store 18, mobile: 089 666 9071	Plovdiv 176 "Brezovsko shose" str. mobile: 089 544 7503 / 089 666 3044	Varna 25 "Usta Kolyu Ficheto" str. mobile: 089 666 9079 / 089 466 9023
Shumen, "Dobrudzhanski" quarter Ind.zone, "Stroykomplekt" site mobile: 089 455 1685 / 089 666 3043	Kardzhali 1 "Klokotnitsa" str. mobile: 089 575 0749 / 089 666 3057	Troyan 49 "Makedoniya" str. mobile: 089 666 9079 / 089 673 4489	Haskovo, 5 "Okolovrasten pat" str. South Industrial zone mobile: 089 666 3051 / 089 241 2833