

2K EPOXY ADHESIVE FOR STONE CARPETS AT VERTICAL APPLYING - REAL 390 QCF

PRODUCT DESCRIPTION

REAL 390 QCF is a two-component, high-strength epoxy-based adhesive, specially developed for application to stone carpets on vertical and inclined surfaces. The adhesive guarantees a strong bond when applying the mixture to the surface without slipping. It provides very good adhesion.

TECHNICAL SPECIFICATIONS

Appearance	Full gloss
Color	White
Density (g/ml +20°C)	1.55 ± 0,05
Mixing ratio by weight	A comp.: 67 units B comp.: 33 units
Solids content by weight (w/w)	% 98 ± 2
Application method	Trowel
Opened working time +20°C	20-25 min.
Fully dry at +20°C	4-10 days
Compressive strength (7 days)	75 N/m ² (TS EN 196-1)
Shore D hardness (7 days)	83
Continuous thermal resistance	from +50°C to +80°C до 7 days



	Touch dry	Hardened after	Interval between layers
-5°C	12 hours	29-30 hours	24 hours
+0°C	9 hours	20-21 hours	18 hours
+5°C	6 hours	13-14 hours	12 hours
+15°C	120-160 min	5-6 hours	3,5 hours
+25°C	80-100 min	3-4 hours	2 hours
+35°C	60-80 min	1,5-2 hours	1,5 hours

ENVIRONMENTAL CONDITIONS

The air temperature should be between +15°C and +35°C. Do not apply at relative humidity above 80%. The temperature of the binder should be at least 3-5°C above the dew point to prevent surface condensation.

It should be noted that the consumption will increase when applying at low temperatures. The surface temperature should be at least +5°C and maximum +45°C.

SURFACE PREPARATION

The surface to be applied must be completely free from dust, oil and other contaminants, and all loose and unstable old coatings must be removed. Rust and loose parts must be cleaned using a diamond tipped machine in accordance with SA 2½ standard, and the surface must be dry, clean and at least +3°C above dew point.

PRIMER APPLICATION

A layer of RESIN 360 primer is applied to the surface with a roller, with an approximate consumption of 0.25 kg/m², and while the primer is still wet, quartz sand with a grain size of 0.8-1.2 mm is sprinkled on the surface, which ensures a strong bond between the concrete base and the stone carpets. The primer layer must be allowed to dry completely.

PRODUCT USAGE

Before use, the components of REAL 390 QCF must be mixed separately until a homogeneous mixture is obtained, then the hardener (B comp.) and the adhesive (A comp.) are mixed in one container and stirred until a homogeneous mixture is obtained.

APPLICATION METHOD

Before application, the inert materials (pebbles) with a size of 2-4 mm are placed in the mixing vessel (mixer), after which the mixture of glue and hardener is added to the pebbles in a ratio of 9% and mixed for approximately 5 minutes until a homogeneous consistency is achieved. The prepared mixture is applied to the surface with an even thickness by spreading with a trowel, the amount of glue (binder) to be used being determined depending on the type and size of the pebbles.

ADDITIONAL PROTECTION (OPTIONAL)

In areas subject to heavy traffic, once the surface has fully hardened, a single layer of REAL 330 QCF binder can be applied with a roller.

CURING TIME

At an ambient temperature of +25°C, the curing time is 10-12 hours, and the surface should not be used during the curing period.

HEALTH AND SAFETY WORKING CONDITIONS

Read the Material Safety Data Sheet (MSDS) for safety rules and warnings.

The most important safety rules to follow are:

- Contact of the product with the skin and eyes should be prevented by using gloves, safety glasses, face mask and cream.
- Ventilation should be provided during application and until the binder has completely dried.
- In case of skin contact, the affected area should be washed with warm water, soap or detergent.
- In case of eye contact, rinse thoroughly with water for at least 10 minutes and seek medical attention.
- All warning notices on the buckets should be read carefully and the recommended handling rules should be followed.

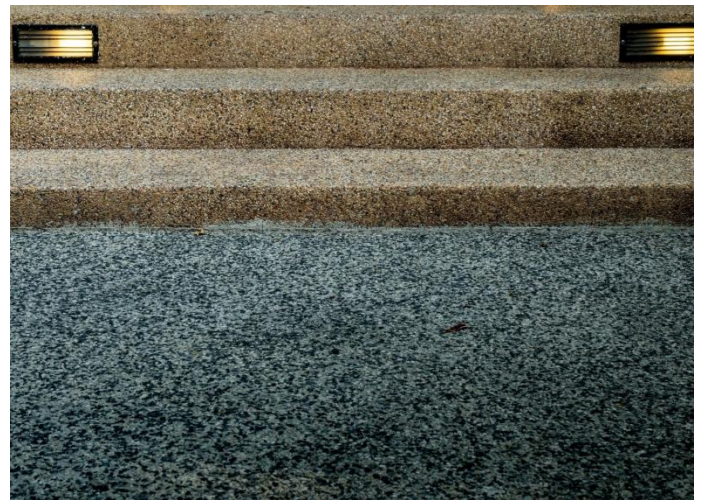
SHELF LIFE

The products should be stored in their original packaging in a dry and cool place.
The shelf life in unopened packaging is 24 months for components A and B.

PACKAGING

REAL 390 QCF

A Component: 2.68 kg.
B Component: 1.32 kg.
Total set weight: 4 kg.



*Product information is prepared based on our own laboratory tests and studies under normal conditions. Our company is not responsible for work performed under inappropriate application conditions. The company reserves the right to change this information. For more detailed information, please contact... R.Y.K.

Rev. No:09/Rev. Date: October 2022



Sofia 6 "Andrey Germanov" str. mobile: 089 666 3042 / 089 468 3880	Sofia, "Ovcha Kupel 1" quarter 33 "Promishlena" str., 429 bl., store 18, mobile: 089 666 9071	Plovdiv 176 "Brezovsko shose" str. mobile: 089 544 7503 / 089 666 3044	Varna 25 "Usta Kolyu Ficheto" str. mobile: 089 666 9079 / 089 466 9023
Shumen, "Dobrudzhanski" quarter Ind. zone, "Stroykomplekt" site mobile: 089 455 1685 / 089 666 3043	Kardzhali 1 "Klokotnitsa" str. mobile: 089 575 0749 / 089 666 3057	Troyan 49 "Makedoniya" str. mobile: 089 666 9079 / 089 673 4489	Haskovo, 5 "Okolovrasten pat" str. South Industrial zone mobile: 089 666 3051 / 089 241 2833