

**TWO-COMPONENT EPOXY RESIN FOR DECORATIVE CHIPS - REAL CP 190**

**PRODUCT DESCRIPTION**

Two-component epoxy resin for decorative chips. Forms a semi-gloss floor coating with high adhesion, suitable for use as an intermediate or final floor coating. Solvent-free.

**TECHNICAL SPECIFICATIONS**

Appearance	Semi-gloss
Color	Colored or colorless
Density (g/ml at +20°C)	1,40 ± 0,05
Mixing ratio by weight	A comp.: 8 units B comp.: 2 units
Solids content by weight (w/w)	% 96 ± 2
Nozzle (inch)	0,019-0,023"
Application method	Air/airless spray, roller and brush
Open time at +20°C	20-25 min.
Complete drying at +20°C	4-6 days



**Drying information (100 micron DFT)**

	Touch dry	Hardened after	Interval between layers
-5°C	12 hours	29-30 hours	24 hours
0°C	9 hours	20-21 hours	18 hours
5°C	6 hours	13-14 hours	12 hours
15°C	120-160 min.	5-6 hours	3,5 hours
25°C	80-100 min.	3-4 hours	2 hours
35°C	60-80 min.	1,5-2 hours	1,5 hours

Wet film thickness (μ)	Dry film thickness (μ)	Consumption rate ± 10 (kg/m <sup>2</sup> )
<b>420</b>	<b>385</b>	<b>0,6</b>

**Note:** As the application thickness increases, the consumption also increases.

### **CHARACTERISTICS AND AREA OF APPLICATION**

Two-component epoxy resin with a semi-gloss surface and high adhesion, solvent-free. Suitable for application as an intermediate or finishing layer. Used in factories, production and assembly halls, warehouses, aircraft hangars, commercial areas, parking lots, food and beverage industry enterprises, water tanks, hospitals, chemical and pharmaceutical production plants, power plants and other industrial sites with high hygiene requirements. Provides good adhesion to various types of substrates.

Contains anti-corrosion pigments, which allows application to metal surfaces. It has good mechanical and chemical resistance, wear resistance and allows easy cleaning. It can harden at low temperatures, which allows for application under less favorable environmental conditions. It is characterized by good anti-corrosion protection, short re-application intervals and relatively fast drying, which makes it suitable for sites with limited implementation deadlines.

### **PREPARATION OF THE BASE**

The substrate to which the epoxy resin is to be applied must be dry, sound and completely free from dust, grease and any contamination. Rust, loose areas and old, flaking coatings must be completely removed by mechanical treatment with a diamond-tipped machine to grade Sa 2½. After mechanical treatment, the dust formed must be thoroughly cleaned. If there are cracks, cavities or surface irregularities, they must be repaired or filled with REAL GR 900 repair mortar before applying the epoxy resin, in order to ensure a smooth and even substrate for application.

### **PRODUCT APPLICATION**

The epoxy resin (comp. A) and the hardener (comp. B) must be mixed well separately. Then the two components are mixed and stirred until a homogeneous mixture is obtained. The resulting mixture is applied to a previously primed surface with epoxy primer (Resin 360). The consumption rate when applying to a smooth and even surface is 0.6 kg/m<sup>2</sup>. After applying the epoxy resin with the hardener, the decorative chips are added and distributed evenly over the surface by spraying.

The amount of decorative chips to be added is 0.5-0.7 kg/m<sup>2</sup>. If there are unfilled areas, add additional chips to the surface. 24 hours after application, the excess chips must be cleaned from the surface and if there are sharp edges, they must be smoothed with a trowel.

As a finishing sealing layer, the ultra UV-resistant epoxy varnish Real 380 Ultra UV is applied. The consumption rate of epoxy UV-resistant varnish is approximately 0.5 kg/m<sup>2</sup>.

### **APPLICATION CONDITIONS**

Application is carried out on dry and clean surfaces at an optimal temperature of +20°C to +35°C.

When applying by spraying with long spray hoses or when the temperature drops below +15°C, dilution may be necessary, which can reduce the layer thickness and extend the drying time.

### **ENVIRONMENTAL CONDITIONS**

The air temperature should be in the range of +5°C to +35°C. Application should not be carried out at humidity above 80%. The surface temperature should be at least 3-5°C above the dew point to prevent condensation.

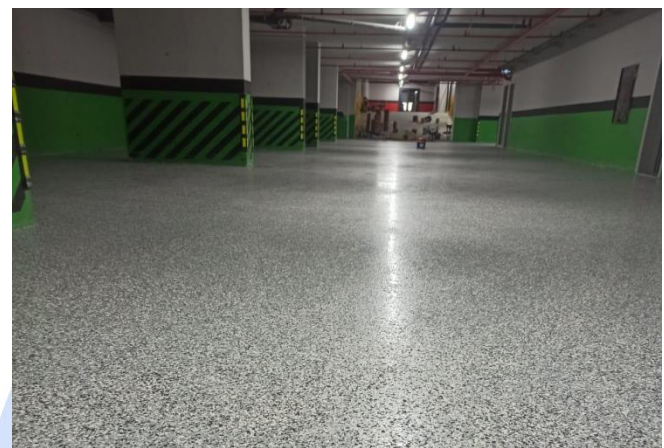
It should be borne in mind that the material consumption will increase when applying at low temperatures. The surface temperature should be at least +5°C and at most +45°C.

## PACKAGING

A component: 16 kg.  
 B component: 4 kg.  
 Total weight of the set: 20 kg.

## SHELF LIFE

The products should be stored in their original packaging in a cool, dry place.  
 The shelf life in unopened packaging is 24 months for components A and B.



## HEALTH AND SAFETY WORKING CONDITIONS

Read the Material Safety Data Sheet (MSDS) for safety rules and warnings.

The most important safety rules to follow are:

- Contact of the product with the skin and eyes should be prevented by using gloves, safety glasses, face mask and cream.
- Ventilation should be provided during application and until the varnish has completely dried.
- In case of contact with the skin, the affected area should be washed with warm water, soap or detergent.
- These materials contain flammable components and should be kept away from sparks and open flames.
- No smoking should be allowed in the area.
- All warning instructions on the buckets should be read carefully and the recommended working rules should be followed.

\* Product information is prepared based on our own laboratory tests and studies under normal conditions. Our company is not responsible for work performed under inappropriate working conditions. The company reserves the right to change this information.  
 For more detailed information, please contact... R.Y.K.

Rev. No:09/Rev. Date: October 2022



www.adacolor-bg.com

Sofia  
 6 "Andrey Germanov" str.  
 mobile: 089 666 3042 / 089 468 3880

Sofia, "Ovcha Kupel 1" quarter  
 33 "Promishlena" str., 429 bl., store 18,  
 mobile: 089 666 9071

Plovdiv  
 176 "Brezovsko shose" str.  
 mobile: 089 544 7503 / 089 666 3044

Varna  
 25 "Usta Kolyu Ficheto" str.  
 mobile: 089 666 9079 / 089 466 9023

Shumen, "Dobrudzhanski" quarter  
 Ind. zone, "Stroykomplekt" site  
 mobile: 089 455 1685 / 089 666 3043

Kardzhali  
 1 "Klokotnitsa" str.  
 mobile: 089 575 0749 / 089 666 3057

Troyan  
 49 "Makedoniya" str.  
 mobile: 089 666 9079 / 089 673 4489

Haskovo, 5 "Okolovrasten pat" str.  
 South Industrial zone  
 mobile: 089 666 3051 / 089 241 2833